

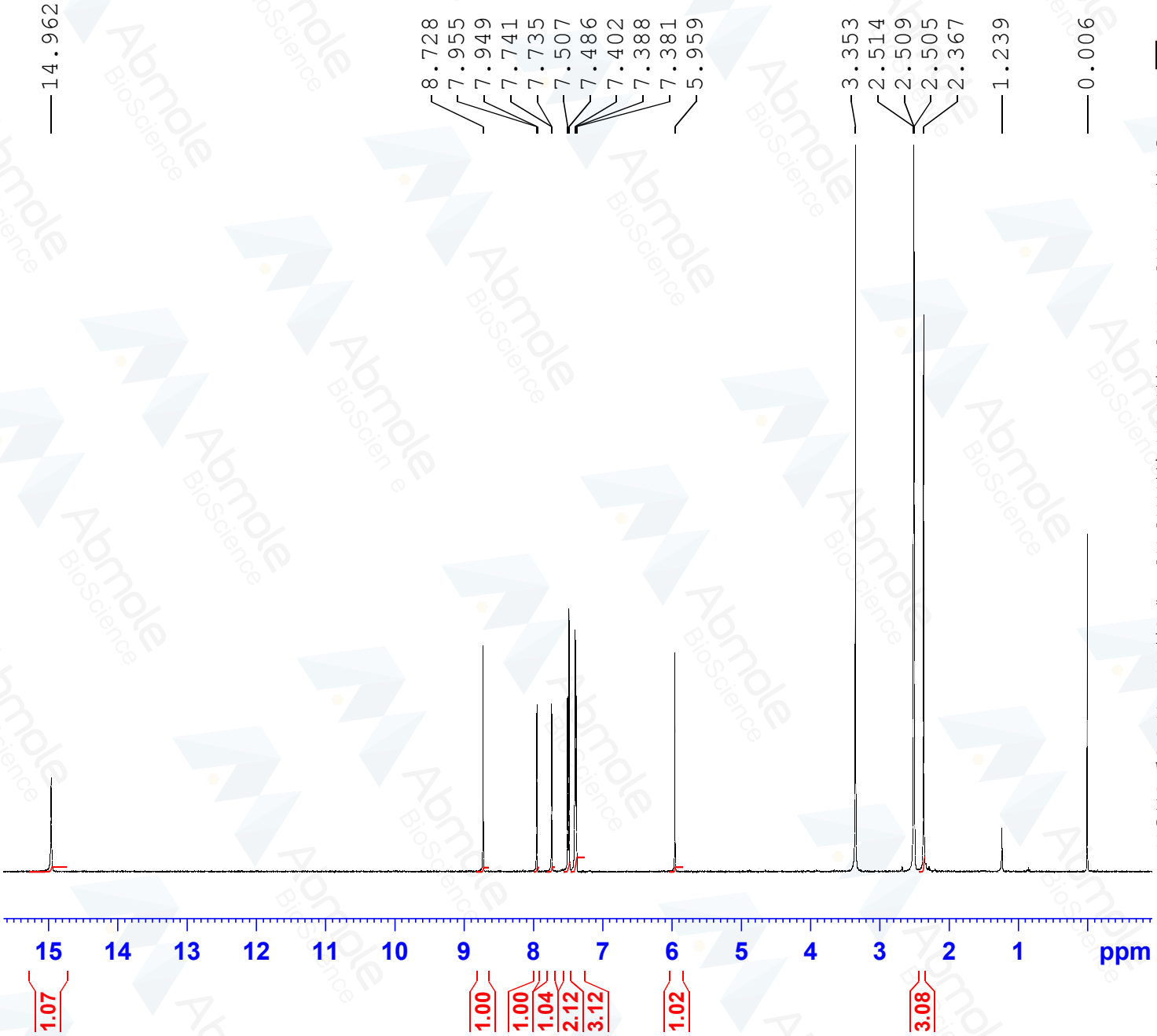


Current Data Parameters
NAME Closantel Sodium-01
EXPNO 1
PROCNO 1

F2 - Acquisition Parameters
Date_ 20180416
Time_ 10.35
INSTRUM spect
PROBHD 5 mm PADUL 13C
PULPROG zg30
TD 65536
SOLVENT DMSO
NS 8
DS 2
SWH 8012.820 Hz
FIDRES 0.122266 Hz
AQ 4.0894465 sec
RG 199.46
DW 62.400 usec
DE 6.50 usec
TE 292.7 K
D1 1.00000000 sec
TD0 1

==== CHANNEL f1 =====
SFO1 400.1324710 MHz
NUC1 1H
P1 10.00 usec
PLW1 20.00000000 W

F2 - Processing parameters
SI 65536
SF 400.1300000 MHz
WDW EM
SSB 0
LB 0.30 Hz
GB 0
PC 1.00



— 14.962

8.728
7.955
7.949
7.741
7.735
7.507
7.486
7.402
7.388
7.381
5.959

3.353
2.514
2.509
2.505
2.367

— 1.239

— 0.006

15 14 13 12 11 10 9 8 7 6 5 4 3 2 1 ppm

1.07

1.00

1.00

1.04

2.12

3.12

1.02

3.08